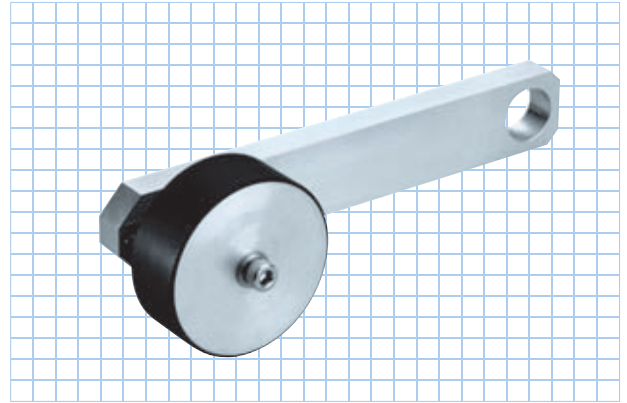
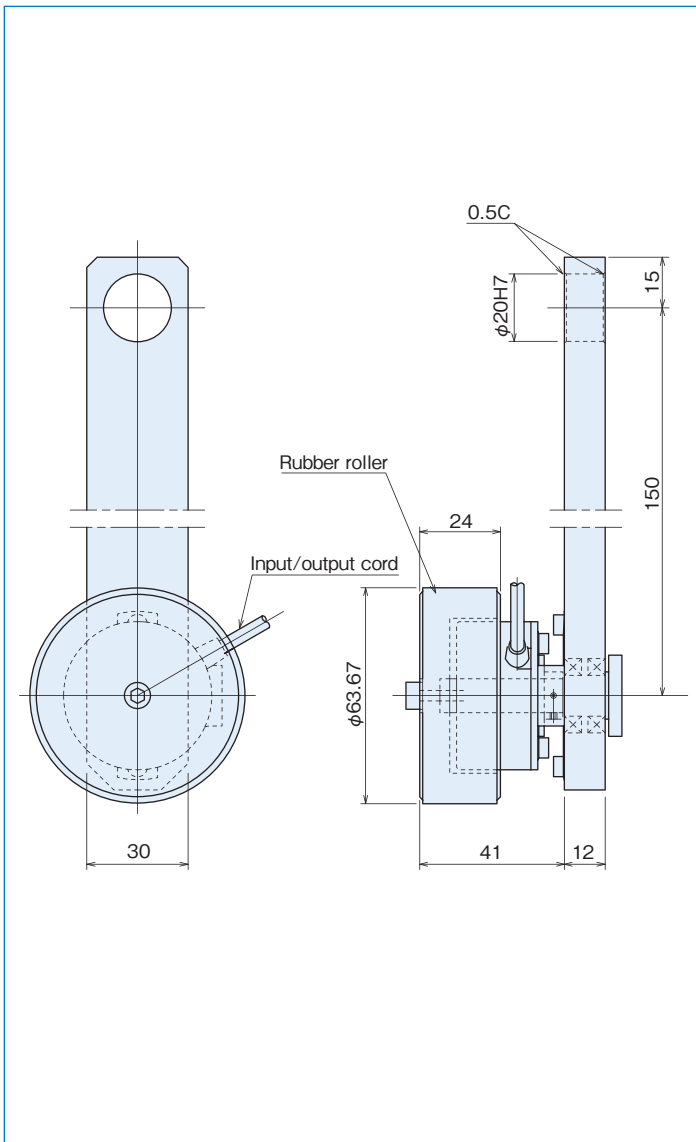


REH-30R series

[Roller Encoder]



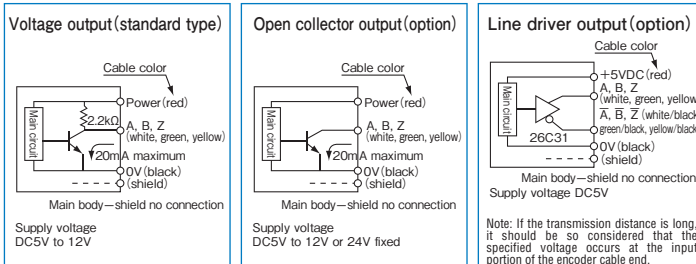
Outside dimensions



Specifications

Type name	REH-30- <input type="checkbox"/> R <input type="checkbox"/>				
Item	Pulse number Output circuit ●No entry=voltage output ●C=open collector output ●C4=open collector output DC24V ●E=line driver output				
Supply voltage	Voltage/Open collector:DC5V-5%~12V+10% DC24V±10%(open collector output only) Line driver:DC5V±5%				
Current consumption	60mA or less(under no load)				
Detection system	Incremental				
Output pulse number	200	400	500	1,000	2,000
Output pulse/1mm	1	2	2.5	5	10
Minimum resolution mm	1	0.5	0.4	0.2	0.1
Output phase	A, B, Z phase				
Output form	Square wave				
Output capacity	Sink current: 20mA Residual voltage: 0.5V or less(at 10mA)				
Maximum response frequency (response pulse number)	100kHz				
Output phase difference	A, B phase difference 90°±45°(T/4±T/8) Z phase T±T/2(see Output Waveform)				
Waveform rise/fall time	2μs or less (output cable 1m or less)				
Allowable load of shaft (electrical)	Radial	19.6N (2kgf)		14.7N (1.5kgf)	
	Thrust	9.8N (1kgf)		4.9N (0.5kgf)	
Maximum allowable revolutions (mechanical)	6,000r/min				
Roller	Outside diameter: φ63.67±0.01 Material: aluminum roll hard urethane rubber baked				
Working ambient temperature/humidity	0°C~60°C RH35%~90% no dewing				
Storing ambient temperature	-20°C~80°C				
Vibration resistance	Durability 55Hz, double amplitude 1.5mm 2 hours each in X, Y, and Z directions				
Impact resistance	Durability 500m/s ² (about 50G) 3 times each in X, Y, and Z directions				
Cable	Outside diameter φ4.2 5-core vinyl wire Insulated shield cable (length 1m)				
Mass	400g				

Output circuit diagram



Output waveform

