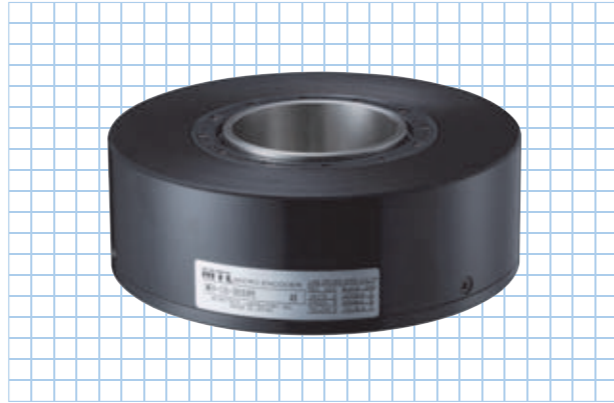


MEH-130-P series

[Square Wave/Incremental]

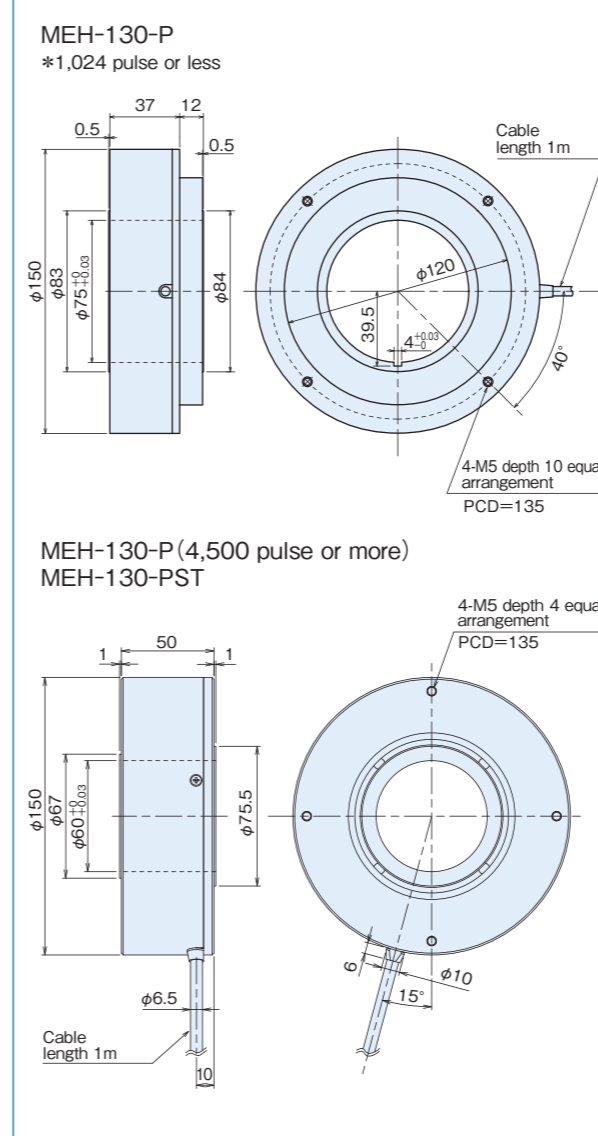


Specifications

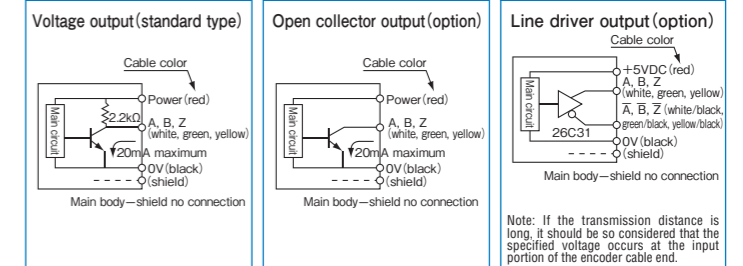
Item	Type name	MEH-130- <input type="checkbox"/> P <input type="checkbox"/>	
		Pulse number: <input type="checkbox"/> No entry=voltage output <input type="checkbox"/> C=open collector output Output circuit: <input type="checkbox"/> E=line driver output <input type="checkbox"/> ST <input type="checkbox"/> (2·4·5·8·10·16·20)	
		Square wave Built-in multiplication circuit (x2·x4·x5·x8·x10·x16·x20)	
Supply voltage	Voltage / Open collector: DC5V-5%~12V+10% Open collector DC24V: DC24V±10% Line driver: DC5V±5%	Voltage: DC5V-5%~12V+10% Open collector: DC5V-5%~24V+10% Line driver: DC5V±5%	
Current consumption	1,024 pulse or less 60mA or less 4,500 pulse or more 100mA or less (under no load)	150mA or less (under no load)	
Detection system	Incremental	Incremental	
Output pulse number (Standard) [Pulse number/rotation]	360	5,000	28,125 (*)
	512	9,000	32,400 (*)
	600	11,250 (*)	36,000 (*)
	1,024	20,250 (*)	
	4,500	25,000 (*)	
Output phase	A, B, Z phase	A, B, Z phase	
Output form	Square wave	Square wave	
Output capacity	Sink current: 20mA Residual voltage: 0.5V or less (at 10mA)	-	
Maximum response frequency (response pulse number)	100kHz	Line driver output: 75kHz× (by multiplication) Open collector output: 100kHz	
Output phase difference	A, B phase difference 90°±45° (T/4±T/8) Z phase T±T/2 (see Output Waveform)	Refer to the figure on the right	
Waveform rise/fall time	2μs or less (output cable 1m or less)	-	
Allowable load of shaft (electrical)	Radial	19.6N (2kgf)	19.6N (2kgf)
	Thrust	9.8N (1kgf)	9.8N (1kgf)
Maximum allowable revolutions (mechanical)	1,000r/min	1,000r/min	
Working ambient temperature/humidity	0°C~60°C RH35%~90% no dewing	0°C~60°C RH35%~90% no dewing	
Storing ambient temperature	-20°C~80°C	-20°C~80°C	
Vibration resistance	Durability 55Hz, double amplitude 1.5mm 2 hours each in X, Y, and Z directions	Durability 55Hz, double amplitude 1.5mm 2 hours each in X, Y, and Z directions	
Impact resistance	Durability 500m/s ² (about 50G) 3 times each in X, Y, and Z directions	Durability 500m/s ² (about 50G) 3 times each in X, Y, and Z directions	
Cable	Outside diameter φ4.2 vinyl wire AWG28 (1024P/R or less) Outside diameter φ6.5 (14-core) vinyl wire (4500P/R or more) Insulated shield cable (length 1m)	Outside diameter φ6.5 14-core vinyl wire AWG28 Insulated shield cable (length 1m)	
Mass	3kg	3kg	

*Handled by built-in multiplier circuit

Outside dimensions

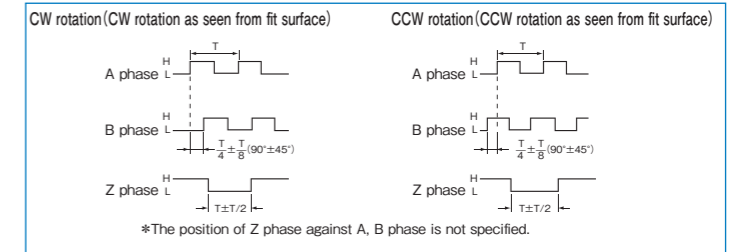


Output circuit diagram

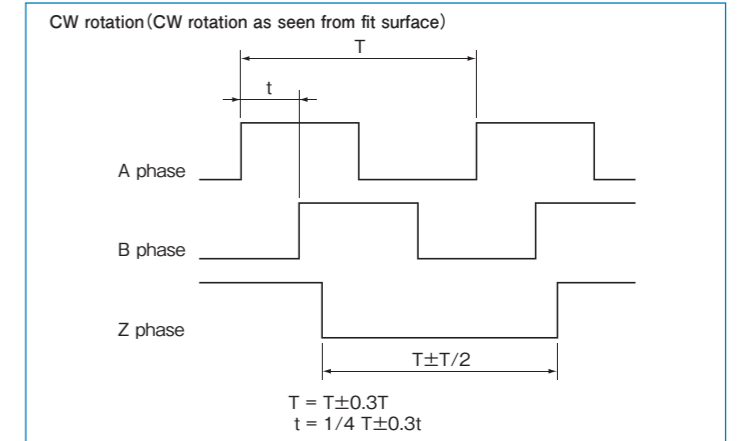


A capacitor (0.1μF) is connected between 0V and FG (frame ground).

Output waveform (Square wave)



Output waveform / Built-in multiplication circuit (x2·x4·x5·x8·x10·x16·x20)



Spring flange MEH-130 (Option)

